

Coach Voices the Benefits of Her Courses

You don't have to be a theatre student to benefit from voice coaching, says University of Winnipeg voice coach Gail Loadman.

In fact, anyone whose job demands the "gift to gab" can reap the benefits of one of Loadman's courses.

"Doctors, lawyers, politicians, professors, television reporters and any other professionals whose job is verbally demanding can benefit," Loadman said.

Essentially, most people who come to Loadman are looking to become more effective public speakers. But Loadman stresses that she works not just on the voice, but on the whole package of professional vocal handling.

The key to successful voice usage is "economy of movement, economy of voice, economy of energy," she said, adding how we speak affects how we see, how we perceive, as well as how people

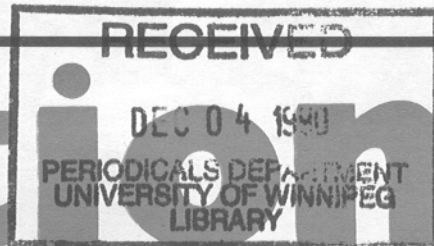
receive us.

"You have to decide what you're doing. Do you wish to arouse, dominate and harangue? Some people hammer with their voices as well as with their hands," Loadman said.

Posture, gestures and the way you hold your head are very important

See *COACH VOICES BENEFITS* page 3.

In Edition



NOVEMBER 29, 1990

THE UNIVERSITY OF WINNIPEG

VOL. 8 NO.7

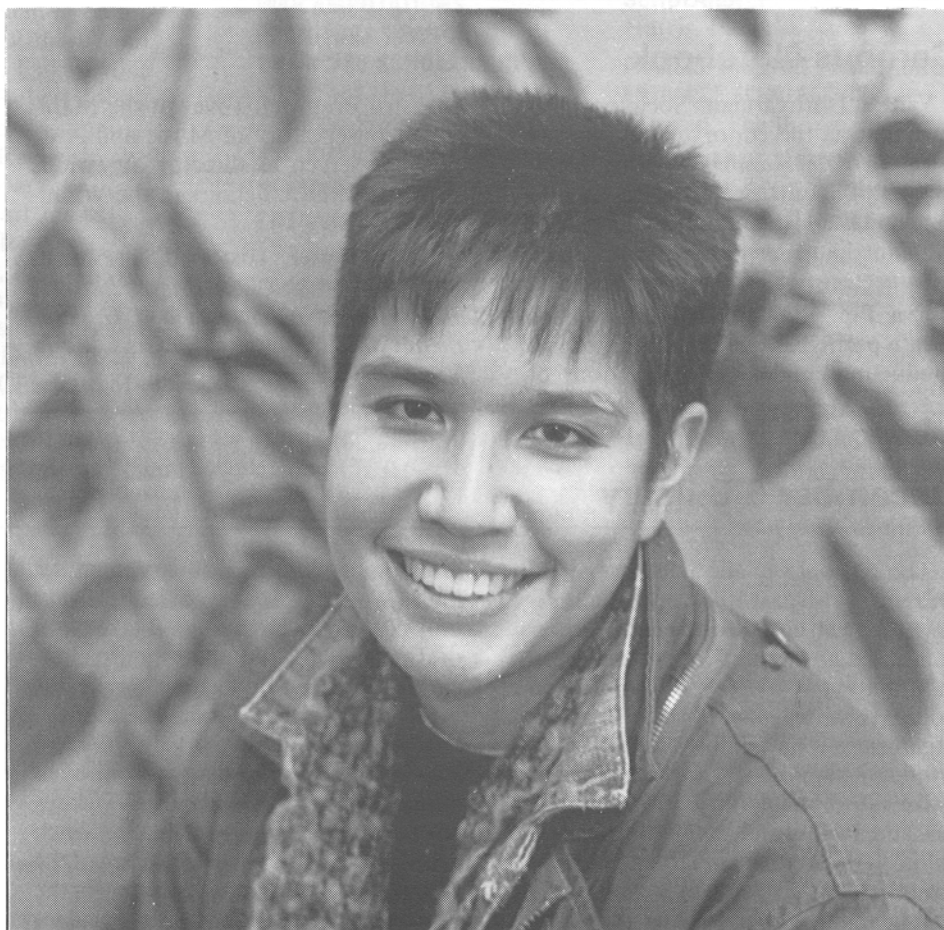
December 6 Bursary Established In Memory of 14 Women

The University of Winnipeg is pleased to announce the establishment of The December 6 Memorial Bursary. The bursary was founded in memory of the 14 women engineering students killed on Dec. 6, 1989, at L'Ecole Polytechnique in Montreal. They were the victims of a shooting spree by one man who said he hated women and feminists. The bursary will be awarded annually to a woman entering or continuing in a degree program in Science.

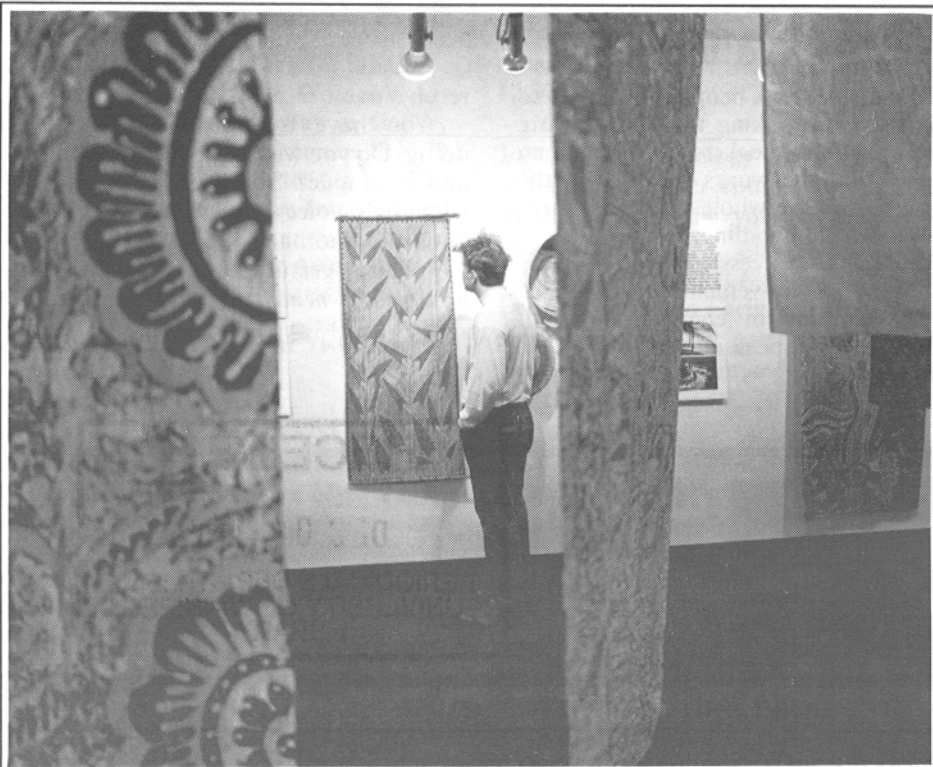
Naomi Guilbert, a 1990 graduate of The University of Winnipeg, was the initiator of the bursary. Naomi recalls that the day after the 14 women were killed, she won the Stephenson Scholarship, one of The University of Winnipeg's most prestigious awards. Naomi donated a portion of her scholarship to start a lasting legacy for the victims of the Dec. 6 shooting.

Naomi explains "The Montreal incident made me acutely aware of the countless number of women in Canadian universities who have the potential to make valuable contributions, but are prevented from doing so, due in part to the physical and mental barriers that are pervasive in our society and institutions of higher learning." Naomi supports educational equality and believes this bursary will serve to remind us of the distance we have to go to achieve this equality.

See *DECEMBER 6 BURSARY* page 2.



Naomi Guilbert asks faculty and staff to consider a gift to the new December 6 Memorial Bursary fund.



Karnta - Aboriginal Women's Art from Australia will continue in Gallery 1C03 until Dec. 5. See "Coming Events" for gallery hours.

Campus Notebook

- **Vanaja Dhruvarajan**, Sociology Department, is the editor of the recently released *Women and Well-being*, a collection of 20 articles from those presented at the 11th annual Conference of the Canadian Research Institute for the Advancement of Women.
- **Eva Pip**, Biology Department, has been a participant in a course in choral conducting under the direction of

Maestro Bramwell Tovey at the Manitoba Conservatory of Music and Arts. She has served as director of various youth and church choirs in the Winnipeg area.

- **Sarah Carter**, History Department, has just published *Lost Harvest: Prairie Indian Reserve Farmers and Government Policy* (Montreal: McGill Queen's Press, 1990).

December 6 Bursary

continued from page 1

The response to the bursary has increased in the past week and Naomi is hopeful it will continue to grow. Various concerned groups and individuals within Manitoba were approached for donations. However, most of these women's organizations have limited funding and, although supportive, are not able to make substantial contributions. Naomi is asking faculty and staff to be the main supporters of this bursary. She urges members of the University community to take the first steps in breaking down the barriers by supporting The December 6 Memorial Bursary.

A special ceremony at The University

of Winnipeg will be held to remember the 14 women who were killed last year on Dec. 6. The ceremony will take place on Dec. 4 at 12:30 p.m. in the Psychology Lounge, 4th floor, Lockhart Hall.

Along with the announcement of the bursary, a plaque by artist Lin Gibson will be unveiled. This plaque is one of 14 that are being displayed in various public locations in Winnipeg. Each plaque commemorates one victim of the Montreal incident. The ceremony in the Psychology Lounge will also include a speech by Gibson, a reading of the victims' names, music and a vigil. Everyone is welcome to attend.

Health

Employee Drinking Problems Difficult to Detect

Employees don't have to be drinking on the job for their work to be affected by an alcohol problem.

According to Lynn Crocker, the University's Health Nurse, "People who have a problem with alcohol do not fit the stereotype." Showing up for work with a hangover or not showing up at all are often signs of weekend or evening drinkers.

"Often it's very difficult for an employer to recognize an employee with a drinking problem until it's at an advanced stage," says Crocker, noting that alcoholism affects men and women differently in the workplace.

"With men, often you will see a decline in the quality of the work that they do," she explains. "Women can be fairly far along in their problem before it affects their job performance." Instead of going to work and doing a poor job, women are more likely to stay home when they have a hangover. Women seem to be more susceptible to ill effects from alcohol because of the way their bodies handle the drug. There is now evidence to show that women are more prone to health damage at a lower alcohol intake, or less alcohol per body weight, than men.

Employers can play a part in helping alcoholic employees get the treatment that they need. Many companies offer Employee Assistance Programs (EAP).

According to Lucille Meisner, a Prevention Education Consultant for the Alcoholism Foundation of Manitoba, "EAPs recognize that if an employee has a personal problem, such as alcoholism, it will often carry over into the workplace. EAPs are designed to help employees deal with these problems so that their jobs will not be jeopardized."

At The University of Winnipeg, call Randy Kroeker in the Counselling Department or Ron Norton in the Psychology Department to find out about an EAP.

Too often an employee's alcohol problem goes undetected until it is so advanced that the individual loses his or her job. Instead of covering up for a co-worker who drinks, urge them to get treatment. Otherwise they may not be a co-worker for long.

- by Marnie Hay

1990 SCHOLARSHIP WINNERS

SIR WILLIAM STEPHENSON AWARD WINNERS

Abizadeh, Arash
Kroeker, Scott
Wasel, Norman
(Honourable mention: Kent
Suss)

CANADA SCHOLARS

(17 winners listed in the Nov.
1 issue of *In Edition*)

SPECIAL ENTRANCE SCHOLARSHIPS (BOARD OF REGENTS)

Adam, Christopher John
Alleyne, Ghislaine Agnes
Armstrong, Neil Douglas
Askin, Jessica Stevens
Balite, Irene
Baydack, Natalie Kristina
Brockman, Denise Yvonne
Buck, Richard Matthew
Buyachek, Dreena Marie
Carroll, Nancy
Carroll, Sandra Leanne
DeYoung, Joel Melton
Dodds, Kathleen Michelle
Dunlop, Kerry Lynn
Dyer, Angela Patricia
Goomansingh, Kyle Sanjay
Grosshans, Richard Eric
Hamade, Catherine Sachik
Hau, Jacky Kai Pun
Hazendonk, Esther
Hodge, Steven Andrew
Hymers, Andrew David
Janzen, Ronald Edward
Keller, Jennifer Dawn
Kerr, Jeffrey Michael
Klassen, Stacy Jaclyn
Kohut, Thomas Jarvis
Koodoo, Stanley Rabindra
Kotowich, Steven Lloyd
Kowalchuk, Barri Wayne
Kowlessar, Debra Lynn

Krahn, Lorena Rose
Kramer, Andreas
Kras, Ana-Milena
Krohn, Craig Rolf Erwin
Kyllo, Greg James
Lowe, Bre Anne
Macaulay, Sean Frederick
Maslanko Barbara Ann
McFarland, Janet Anne
Meier, Janice Tricia
Modha, Ashok
Modha, Ronuk
Olafson, Kendiss Paula
Ozubko, Kimberly Alesia
Penuita, Kelly Lynn
Pesun, Simona
Peters, Tanya Luise
Psooy, Brian Joseph
Reineke, Richard Bernhard
Reyes, Martha Concepcion
Richard, Melanie Mae
Riese, Jennifer
Ripat, Pauline Laura
Roller, Karen Lisa
Rokosh, Bradley
Roytburg, Artur
Runchey, Vincent Edwin
Sam, Diana Linh-Linh
Sanders, Reni Lynn
Sawatzky, Robert John
Schroeder, Erika Lynne
Schroth, Robert John
Sengar, Sarit Kumar
Siemens, Rachel Lynne
Soliven, Mark
Spivak, Carl James
Stagg, Jeffery
Strempler, Richard Mark
Thompson, Timmalee Anne
Tobin, Alison Margaret
Traverse, Dawn Colleen
Turenne, Charlotte May
Vizza, Patrizia
Ward, Nicole Leanne
Wiebe, Christopher Shaun

INTERNATIONAL BACCALAUREATE SCHOLARSHIPS

Abel, Scott David
Dent, Shelley Leanne
Harker, Morgan Levi
Hood, Graeme

NATANIS AGNES PHILLIPS MEMORIAL ENTRANCE SCHOLARSHIPS

Attallah, Susan Nicole
Hood, Graeme
Tremblay, Olivia H.

LUELLA SPRUNG MEMORIAL ENTRANCE SCHOLARSHIP

Bacala, Raymond Andrew

HENRY EDMISON DUCKWORTH ENTRANCE SCHOLARSHIPS

Boniecki, Dariusz
Ireland, Virginia Faye
Lee, Chung Pak
Oike, Lisa Katherine
Wong, Tung Po

ELINOR E.F. BLACK ENTRANCE SCHOLARSHIP

Caceres, Marilyn Patricia

WAR AMPUTATIONS (MANITOBA BRANCH)

ENTRANCE SCHOLARSHIP
Crawford, Jo-Ann Isabel
Leppky, Tracy Diane
Presloski, Sherri May

H. EMERSON SNYDER ENTRANCE SCHOLARSHIP

Demianczuk, Arkadiy Nestor

GLADYS K. THOMPSON MEMORIAL ENTRANCE SCHOLARSHIP

Erickson, Arlene Mary

MANITOBA BLUE CROSS ENTRANCE SCHOLARSHIP

Fodor, Liz R.

DR. ANNIE MAE MOORE MEMORIAL ENTRANCE SCHOLARSHIP

Fooks, Angela
Murray, Amanda Michelle
Ozubko, Kimberly Alesia

ALFRED DUNCAN LONGMAN SCHOLARSHIP

Friesen, Cheri Lyn

LEONARD KRUEGER SCHOLARSHIPS

Friesen, Cheri Lyn
Jensen, Paul

MANITOBA UNITED CHURCH WOMEN'S SCHOLARSHIP

Johannson, Catharine Christine

MASONIC PAST MASTERS' ASSOCIATION OF MANITOBA ENTRANCE SCHOLARSHIP

Johannson, Catharine Christine

C.A. DEFEHR MEMORIAL ENTRANCE SCHOLARSHIP IN MENNONITE STUDIES

Kehler, Joyce

CECIL ESSADELLE ROMBOUGH MEMORIAL ENTRANCE SCHOLARSHIP

Harris, Laurelle Anne

FRANCIS WINSTON ARMSTRONG ENTRANCE SCHOLARSHIP

Nguyen, Thanh

RUTH WARNE MEMORIAL ENTRANCE SCHOLARSHIP

Okafor, Tania Ijeoma

CHANCELLOR PAUL H.T. THORLAKSON ENTRANCE SCHOLARSHIPS

Struch, Joanne Lynn
Wan, Pik Ha

JAMES H. CAMERON MEMORIAL SCHOLARSHIP

Yetchishin, Laurie Anne

Coach Voices Benefits

continued from page 1

ments when addressing an audience, she added.

Loadman teaches how to telegraph the voice as well as correct posture and relaxation techniques that help maximize your speaking ability. "By freeing the body of unnecessary tension you free the voice," Loadman said.

As well as being voice and speech coach for The University of Winnipeg's Theatre Department, she teaches levels one and two in accent refining through the University's Continuing Education Division. In these classes, she's worked

with people from all over the world, including Vietnam, Chili, Poland, Russia, Germany, Punjab and Ethiopia.

She's currently working with eight students from Hong Kong, and every spring she works with English immersion students from Quebec.

"We work at improving their accents until they're easily understood," said Loadman, adding that she works exclusively on Canadian accent patterns.

She also teaches classes with Prairie Theatre Exchange, where she just finished a five-week seminar course on speech and voice dynamics.

As well as concentrating on telegra-

phing the voice, she puts emphasis on adding qualities that make a speaker interesting such as humour and the pitch of the voice.

An important message to all her students is not to abuse your voice. This can mean no yelling, no screaming, and no droning on and on in a monotonous voice. "A monotonous voice wears out the vocal chords," Loadman said.

For those who like to work one-on-one, Loadman does private consulting. Her clients have included politicians, contemporary musicians, lawyers and ministers - literally anyone who talks a great deal.

- by Helena Cole

Holiday Reception Honours Retirees

A reception to celebrate the holiday season and honour December retirees will be held on Fri., Dec. 7 from 2 to 4 p.m. in Riddell Hall Dining Room. Presentations will be made at 2:30 p.m. The following retirees will be honoured at the reception:

Frederick Barth, Chemistry
Brian Bendor-Samuel, French
Thomas Marshall, Security
Raymond Mikulik, Computer Services
Mildred Prestay, Controller's Office
Vincent Rutherford, History
Slavko Slejko, Physical Plant
Jack Steinbring, Anthropology
Gerald Steski, Physical Plant
Paul Tetreault, Physical Plant

Senate Decisions

November 19, 1990

- accepted two new student awards
- approved changes to the terms of one existing student award
- approved for transmission to the Universities Grants Commission comments on three programs proposed by the University of Manitoba
- approved new regulations on placement in language development courses for incoming students

COMING EVENTS

CONTINUES UNTIL WED., DEC. 5

— **Karnta - Aboriginal Women's Art from Australia** will be on display in Gallery 1C03. Gallery hours are Mon. - Fri., 10 a.m. to 3 p.m., Sat., 1 to 4 p.m. The exhibition is circulated by International Programme, Dept. of Communications, Canada. Organized by the Association of Northern and Central Australian Aboriginal Artists and the Australian High Commission.

THURS., NOV. 29 - FRI., NOV. 30

— **Women and Aids Conference** will be held at the Downtown Winnipeg Holiday Inn. Community agencies and government are sponsoring this event in support of World Aids Day. For further information, call 945-6791.

THURS., NOV. 29

— **An Open Meeting on the new draft Sexual Harassment Policy** will be held at 4 p.m. in Room 1L10. All faculty and staff are invited to attend.

FRI., NOV. 30

— **Skywalk Series** guest speaker Doug Skoog, Sociology Department, will speak on "Public Perceptions of Crime."

— **Music-at-Noon** features Music Plus, chamber music ensemble, at 12:30 - 1:20 p.m. in Theatre 3C00.

MON., DEC. 3

— **The Candlelight Carol Service** will be held at 12:30 p.m. in Bryce Hall Chapel.

— James Miller, Associate Professor at The University of Western Ontario, will lecture on **Desire and Defiance: The Politics of Aids** from 12:30 - 1:30 p.m. in Room 3C01.

Skywalk Series Continues

The Skywalk Concert and Lecture Series continues every Wednesday, Thursday and Friday at the Winnipeg Centennial Library. Each program is held from 12:15 to 12:45 p.m. in the 2nd floor Auditorium, off the Skywalk. Check "Coming Events" for details on upcoming concerts and lectures.

MON., DEC. 3 - FRI., DEC. 7

— Kenneth Hamilton, Professor Emeritus at The University of Winnipeg, will hold an **Exhibition /Sale of Watercolours** in the Library Mezzanine. Exhibition hours: Mon., 3 - 10:45 p.m.; Tues. - Thurs., 8 a.m. - 10:45 p.m.; Fri., 8 a.m. - 1 p.m. Proceeds from the sale will be donated to the Library.

TUES., DEC. 4

— A **December 6 memorial ceremony** will be held for the 14 women killed at Montreal's L'Ecole Polytechnique. A plaque by artist Lin Gibson will be unveiled. The ceremony will be held in the Psychology Lounge at 12:30 p.m.
— **Last day of classes.**

WED., DEC. 5

— **Skywalk Series** guest speaker Katherine Schultz, Department of Psychology, will speak on **Drugs R Us: A Brief Look at the Continued Use of Psychoactive Drugs.**

— **An Open Meeting on the preliminary report of the Futures Committee** will take place at 4 p.m. in Room 1L11. All faculty and staff are invited to attend.

THURS., DEC. 6

— **Skywalk Series** concert featuring Therese Costes, soprano, with Mary Jo Carrabre on piano.

FRI., DEC. 7

— **The President's Annual Holiday Reception** and honouring of the December retirees will be held from 2 - 4 p.m. in Riddell Hall Dining Room.

— **Skywalk Series** guest speaker Diane Keating, Collegiate English Department, will speak on **What You See Is What You Get, Or Is It?: Perceptions of Reality in Film.**

SAT., DEC. 8

— The Annual University **Children's Christmas Party** will be held from 2 - 4 p.m. in Riddell Hall Dining Room.

FRI., DEC. 21 - WED., JAN. 2

— The University will be closed for **Christmas holidays.**

MON., JAN. 7 - FEB. 25

— Norm Velnes will lead the course **Stewardship for the 90s.** Seminars will be held Mondays, 7 to 10 p.m., in Room 2B14 until Feb. 25. Registration fee for non-credit is \$70 and \$80 for a Certificate in Theology credit.

IN EDITION is published every two weeks during the regular academic session by the Public Relations Office, The University of Winnipeg, 4W16 - 515 Portage Ave., Winnipeg, Manitoba R3B 2E9.

Editor: Lois Cherney
Information Officer
Telephone: (204) 786-9134

Comments, suggestions and submissions are welcome. (All material is subject to editing.) The copy deadline for the next issue is Dec. 4.

IN EDITION is printed on recyclable paper. After you're finished with it, please place it in your Paper Grower tin.