

in edition

SEPTEMBER 22, 1993

VOL.11 NO.2

Campus Benefits From Generosity to the United Way

The University of Winnipeg's annual United Way campaign kicks off Tues., Sept. 28 with the familiar pancake breakfast in Riddell Hall. This year's co-chairs are Ingrid Wedlake, manager, Community Access, and Danny Blair, assistant professor of geography.

By now, everyone is familiar with the annual fall event, but not everyone realizes that at some point in our lives we, or our families, are touched by the generosity of others.

"The United Way funds 60 different agencies," says Wedlake. "I think it touches everyone at some time in their life; chances are good that you, someone in your family, or

someone you know has used one of the organizations."

Here on campus, many people receive services supported by the United Way. The Interfaith Pastoral Institute was allocated \$103,240 in United Way funds last year. The institute provides professional individual, couple and family counselling. Services are offered on a first-come first-served basis.

"One of the greatest benefits of United Way funding is that it allows us to have a sliding scale of fees, and therefore accommodate different income groups," explains Pat Power, administrative assistant at the Interfaith Pastoral Institute. "Having a sliding scale means no one is excluded."

See UNITED WAY page 2



On your mark, get set, go! The University's United Way campaign will be off to an exciting start with the annual wheelchair race and many other special events.

University Enrolment Up Slightly

The University of Winnipeg first-year enrolment has increased very slightly over last year. As of the end of the first week of classes, first-year enrolment was up 0.5 per cent. First-year science enrolment saw an increase of 2.5 per cent over last year.

Overall, 3,221 full-time students are enrolled this year, compared to 3,045 last year. Part-time students, however, have decreased to 4,195 from 4,437. The total student enrolment in science has increased by 5.9 per cent. These statistics are also based on numbers available as of the end of the first week of classes.

As has been the trend for a number of years, enrolment for women is higher than it is for men. There are only 3,193 male students compared to 4,133 female students. The total is slightly less than the total enrolment of 7,416 as it does not include special categories such as students enrolled in master's degree programs.

The **UNIVERSITY**
of **WINNIPEG**

Food Service Contracts Renewed

Versa Foods and Red Carpet Vending Services will continue to satisfy the hunger pangs of students, faculty and staff for the next five years.

This summer both companies were awarded contracts to serve The University of Winnipeg community, after an ad hoc users committee reviewed six proposals.

"We decided to renew our contracts with Versa and Red Carpet because they presented the best proposals," said Steve Coppinger, associate vice president (finance & admin.). "They were both willing to provide a fair return to the University and to put some capital investment into their areas."

During the summer, Versa financed major renovations to the Lockhart (first floor) Buffeteria and some minor improvements to the Centennial (4th floor) Buffeteria. The \$150,000 investment included replacing tables and chairs, upgrading the lighting and re-designing the serving area in Lockhart, as well as tiling the walls and re-laminating the counters in Centennial.

Red Carpet has agreed to install a built-in bank of vending machines on the first floor of Centennial Hall.

United Way

continued from page 1

Other areas on campus benefit indirectly. University of Winnipeg students who use the resources of the Nathan Micay Learning Resource Centre may have been helped along the way by United Way donations. The Canadian National Institute for the Blind, the Canadian Paraplegic Association and the Society for Manitobans with Disabilities all receive United Way funds that are used to help individuals gain independence and have the lifestyles they want.

Versatech Industries, which provides recycling services on campus, receives United Way assistance. The organization provides employment for mentally and physically-challenged individuals. "Our employees may have special needs, but they enjoy and take a real pride in their work," says Versatech's president Terry Cheater. "One employee had saved money to contribute to the United Way campaign," says Cheater. "He said he was glad he had a job, and he wanted to help those who were less fortunate."

Please see "Coming Events" for a list of this year's United Way activities.

Wanted: Story Ideas

Fall convocation is fast approaching, so we are busy searching for interesting graduands to feature in the *Convocation Bulletin*. If you know of anyone graduating Oct. 24 who has an unusual background or impressive accomplishments, please call the editor, Lois Cherney, at 786-9134.



Lockhart Buffeteria re-opened this fall with a new look.

in edition is published every two weeks during the regular academic session by University Relations, The University of Winnipeg, Room 4W16-515 Portage Ave., Winnipeg, Manitoba, R3B 2E9.

Editor:
Lois Cherney
Communications
Coordinator
Tel: (204) 786-9134
Fax: 783-8983

Comments, suggestions and submissions are welcome. (All material is subject to editing.) The copy deadline for the next issue of *in edition* is Sept. 27.

in edition is printed on recycled paper. After you have finished with this issue, please put it in your Paper Grower tin.

University Takes Inventory

Over the next six months The University of Winnipeg will be taking stock of almost everything it owns - from computers and desks to research and lab equipment.

The campus-wide inventory, approved by the Board of Regents' Finance Committee, is being undertaken so that the University will have more accurate information for insurance purposes and for annual financial statements.

"We've never done a snap-shot inventory, so we don't have a good sense of the value of our fixed assets," explained Brian Bater, director of purchasing.

"If a building was destroyed, we wouldn't have a good estimate of what it would cost to replace everything in it. This inventory will give us a much better idea of exactly what we have and how much it's worth."

Assistant Controller Gary Pawlychka explained that during the next six months, a team of four specially trained employees will come in on weekends and evenings to take inventory of all items worth over approximately \$200.

The team will begin by assessing classrooms and then work its way through labs, computer areas, offices and common areas.

"Before the team comes into a department, the employees of that area will be asked to label personal items with post-it notes and to lock filing cabinets that contain confidential documents," said Pawlychka.

As organizers of the inventory, Bater and Pawlychka are currently meeting with all deans, directors and department chairs to explain the details of the project, which is scheduled to begin on Oct. 1.

Campus Notebook

-**Tom Kendall**, Wesmen women's basketball coach, was awarded a Commemorative Medal for the 125th anniversary of Canadian confederation. The award is presented to individuals who have made a significant contribution to Canada, to their community, or to their fellow Canadians.

Kendall coached the women's basketball team to their first Canadian Interuniversity Athletic Union (CIAU) national championship, and was named CIAU coach of the year for the second time in his career. He was a driving force behind the development of the Physical Activity and Sport Studies program at The University of Winnipeg.

Since 1984 Kendall has been president of the Manitoba Amateur Basketball Association, an elected volunteer position.

-Two University of Winnipeg students presented papers at the 6th annual Geographic Information Systems (GIS) Applications Colloquium. The colloquium was held June 2 at The University of Winnipeg. **Helen Purves** presented "Use of GIS in the Canadian Parks Service," and **Kirby Gehman** spoke on "Potential Military Applications of GIS."

-**Kenneth Meadwell**, associate professor of French, is visiting professor of Canadian Studies at the Hebrew University of Jerusalem for the second term of the 1993/94 academic year. His recent publications include: "Marginalité et marginalisation discursives dans *Le Passager* de Gilbert La Rocque et *Les Demoiselles de Numidie* de Marie José Thériault," published in *Le Récit québécois depuis 1980*, a special issue of *Dalhousie French Studies*, vol. 23 (fall-winter 1992) and "Gabrielle Roy" in *Magill's Survey of World Literature* (Pasadena: Salem Press, 1993).

-**Dan Chekki**, professor of sociology, is the editor of *A Quarter Century of Sociology at The University of Winnipeg*. The volume includes 14 articles on the interplay between sociologists and institutional structures in the development of their careers. It will be useful for anyone interested in the history and sociology of sociology and in the sociology of knowledge. Copies of this work are available in the Bookstore.

Recreation Department Offers Variety of Activities

Faculty and staff are welcome to participate in the wide variety of activities offered by Recreation and Athletic Services.

Club programs in karate, tae kwon do, and badminton run in the evenings. Popular noon-hour activities include aerobics classes at the Duckworth Centre and tai chi classes, held every Tuesday and Friday. Ken Krebs (Technical Support Services) has worked hard to involve staff in tai chi, a stress-reducing training program.

Co-ed intramural leagues are offered in several sports including volleyball, floor hockey, soccer, badminton and ice-hockey (Friday afternoons).

Along with all these programs, the Duckworth Centre offers members the use of first-rate facilities, including squash and racquetball courts, the running track and the weight room.

For more information, please visit the facility desk at the Duckworth Centre or call Doug Reimer at 786-9819.

New Program Offers Customized Learning

Continuing Education's new Communications Certificate Program encourages students to customize the learning experience to their own needs.

According to coordinator Kim Loeb, the new program offers a lot of variety and flexibility, while ensuring that students acquire the fundamental skills needed for a career in public relations, marketing or advertising.

"With a new balance of basics and specialized courses, we tried to create a program that is useful to everyone—from people just starting in the field to experienced communications professionals," said Loeb.

She noted that the format has been designed to suit a wide range of interests and career goals: "Students learn basic skills and touch on many aspects of the communications field, plus they select one specialty to explore in more depth. This gives them a broad perspective and a specific focus as well as plenty of leeway to tailor the program to meet their own needs."

The foundation of the new program is four required courses in writing, oral communication, mass media and marketing fundamentals. Students then build on these basics by adding courses in one of three specialty areas - public relations, advertising or marketing.

According to Loeb, the most innovative feature of the new program is the customized component. In this portion of the program, students select 75 hours of short courses that suit their interests or help them solve real day-to-day problems. "They can dabble a bit in different areas by choosing courses from a specialty not their own, from a list of related electives or from our writing series," Loeb explains.

Another option in the customized component is to take offerings from the new "Communicators Edge Seminar Series." Topics in this series will include "Special Events Planning and Management," "The Art of Fundraising" and "Creating Effective Newsletters."

"These workshops give you the latest information and techniques in high energy one-day sessions," said Loeb. "They are ideal for people already working in the communications field, because these workshops are designed to be convenient, focused and topical."

For more information on the Communications Certificate Program, please call Kim Loeb at 942-4211.

The State of the University

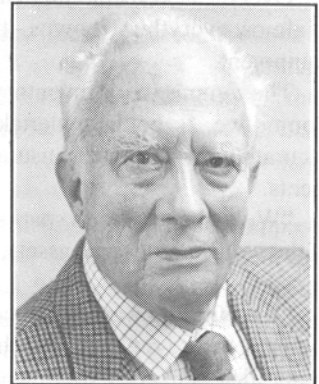
President Marsha Hanen will give a "State of the University" address on Oct. 4, 12:30 p.m., in Theatre B, 4th floor, Manitoba Hall.

Menno Simons College Welcomes U.K. Mediator

Adam Curle, a specialist in conflict resolution, is the Esau Distinguished Visiting Professor at Menno Simons College this fall. Curle is currently one of the conflict mediators in the former Yugoslavia.

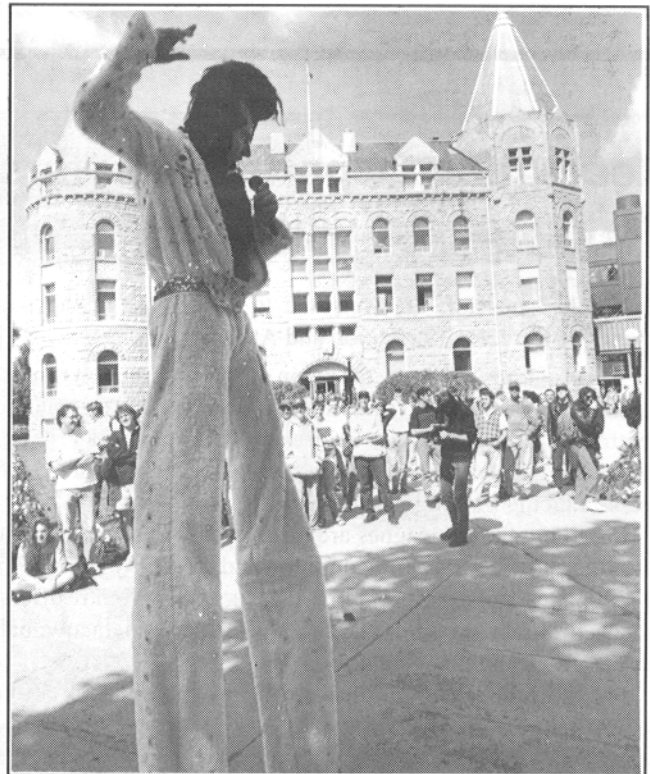
A Quaker elder, Curle is retired from a distinguished academic career at such universities as Oxford, Exeter and Harvard, where he was a professor of education and development. He has also worked in 25 third world countries on problems related to poverty and conflict.

Curle is teaching two first-term courses, "Conflict and Change" and "Responses to Conflict in the Global Arena," and will be giving this fall's Mennonite Lecture Series.



Visiting Professor Adam Curle joins Menno Simons College.

The Esau Distinguished Visiting Professor program was established in 1988, the same year Menno Simons College became an affiliated college on the campus of The University of Winnipeg. It was made possible by an endowment from the Esau family.



Elvis was sighted on campus after the Annual Great Rock Climb. Neal Rempel raised the legendary rock star to new heights with his 10-foot radioactive Elvis act.

New President Seeks to Expand Alumni Involvement in University

Diane Phillips, BA '69, is the 1993-94 president of The University of Winnipeg Alumni Association.

Phillips is employed by the Transcona-Springfield School Division as the Senior Years Consultant; she works with teachers on staff and professional development, and works on curriculum development and implementation for grades 9 through 12. To enhance her professional skills, Phillips is enrolled in the two-year Curriculum Studies Master Program in the Faculty of Education at the University of Manitoba.

As president, Phillips wants to expand alumni involvement as a volunteer support base for the University. "We've found a lot of 'lost' graduates, and we're building a solid database, which is a tremendous help," she says. "The task is made easier by a dedicated group of volunteers serving on the alumni council and in the volunteer centre," she adds.

Phillips suggests that by implementing a sub-committee structure of the alumni council more alumni could become involved with the University. "I think this would bring in people who had limited time to work on a short-term project, or those whose interests were in a specific area," she says.

And there's no shortage of areas that could use sub-committee involvement, Phillips points out: student liaison/career symposium, special events with the athletic depart-

ment, support for the visual and performing arts (Phillips suggests possibly a film festival featuring productions of alumni), phoning committees and reunion committees.

Phillips also aims to continue the association's emphasis on fundraising. "The money we raise through donations and special events enables us to continue with our alumni entrance scholarship program," she says. "The program includes eight awards each year of \$2,400 apiece."

"We've also raised funds for special university programs such as the Nathan Micay Learning Resource Centre. We've raised close to \$9,000, which the Centre used to purchase equipment for visually impaired students," she adds.

"President Hanen has been very supportive of new initiatives linking the University to the community at large, and to the community colleges," says Phillips. "I would like to see the alumni association also become a bridge between the University and the community it serves." As an example, Phillips suggests that an alumni presence at student orientation or career symposiums might be a valuable resource to students considering certain professions.

Phillips is looking forward to providing support for those classes celebrating special anniversaries. "I especially look forward to working with the group from the class of '69 to prepare for our 25th anniversary in the fall of 1994."



Diane Phillips is the new president of the Alumni Council.

The Public Understanding of Science: Why Does it Matter?

A highly regarded expert in science communications will be this year's Laird Distinguished Lecturer.

Professor Edna Einsiedel of the graduate program in communications studies at the University of Calgary is coming here Oct. 7 to speak on "The Public Understanding of Science: Why Does it Matter?"

Einsiedel directed a national survey of scientific literacy among adult Canadians and is collaborating with researchers in the United States, England, Japan and the European community to allow cross-cultural comparisons on the issue of scientific literacy. Two of her special interests are health and environmental communications, including the issue of risk communications.

Einsiedel has received a number of research grants from the Social Sciences and Humanities Research Council (SSHRC) and Industry, Science and Technology Canada to study the nature of the coverage of science and technology

issues in the Canadian mass media and to construct a profile of science writers and how they do their work.

She has done consulting work with Statistics Canada on the science portion of their general social surveys. She has also served as an academic consultant to organizations such as the Canadian Cancer Society (Alberta Division) and Alberta Health on their public education programs.

Her teaching areas include media studies, research design, public communication and education programs. She has a PhD from Indiana University in communications and social psychology.

The University of Winnipeg Laird Distinguished Lecture was established by Elizabeth Laird, a physicist who taught at Mount Holyoke. The lecture features a topic related to mathematics or science.

See "Coming Events" for details on Professor Einsiedel's Oct. 7 lecture.

Paintings and Drawings Exhibited in Gallery 1C03

Gallery 1C03 is pleased to present "View From the Plain: the art of Ernest G. Wilson (1933 - 1987)," as the first exhibition of the 1993-94 academic year.

Ernie Wilson was born in Winnipeg in 1933. He studied at the Manitoba School of Art, graduating in 1955 with a diploma in art. He then travelled to the Canadian Arctic, Europe and the U.S.A.

Like many artists, Wilson relied on regular employment for most of his income; he was a highly rated graphic designer. Wilson designed the familiar duck's head logo that has become an international Ducks Unlimited symbol. He was employed as art director by Pollard Banknote Ltd. for over 20 years. Nevertheless, he remained a vital figure in the Winnipeg art community. According to Ann Cameron in *Art in Winnipeg. 1955 to 1959*, Wilson initiated the technique of ink graphics, a development in the late '50s that was, in a sense, unique to Winnipeg.

According to artist Kelly Clark, Wilson's fine drawing ability was evident even in his art school days: "So many great artists were there in the '50s, but Ernie was the star—we all wanted to emulate his work."

As well as being an artist and an innovator, Wilson was an excellent writer; he expressed his ideas about art, artists and the contemporary art scene in a monthly column, "View from the Plain," in *ArtsWest* magazine.

Whether attempting to define the structural nature of art,

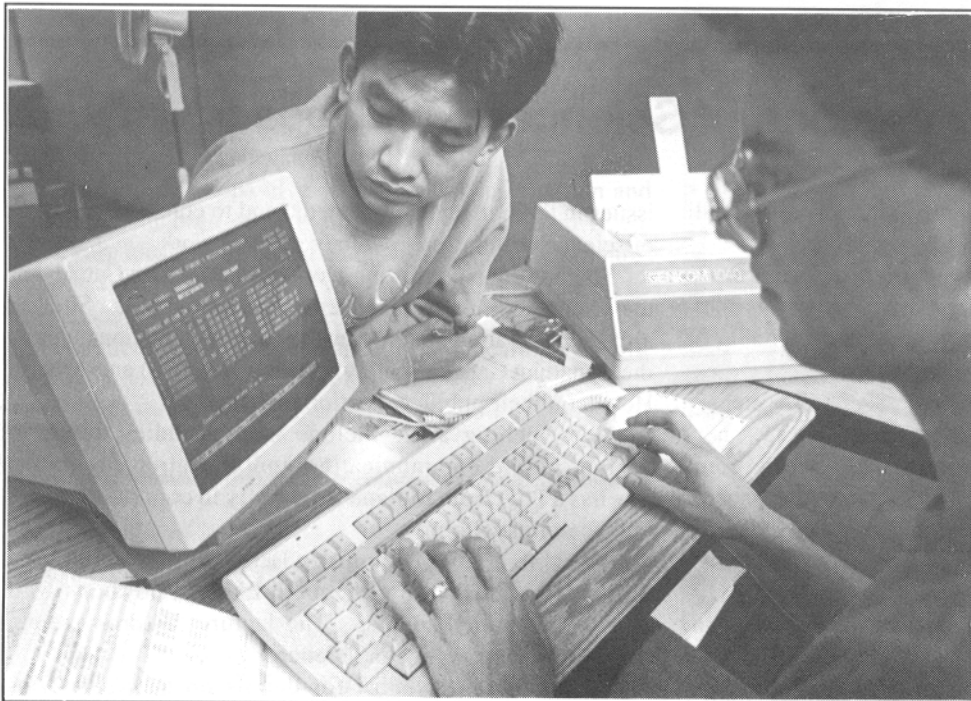
or railing against what he believed was the WAG's paucity of vision and alienation of the province's visual arts community, he remained a strong voice for the excellence of this province's artists.

Wilson died suddenly on Dec. 30, 1987. He left behind a remarkable volume of work - his art school portfolio, large canvases and small drawings on scraps of paper, exhibition works and experiments.

The exhibition at the University of Winnipeg consists of a selection of Wilson's pen and ink and brush and ink drawings, from throughout his career, as well as a few oils on canvas. Wilson himself grouped his works in series - the wrapped figures for example, some hanging, some supine, some impaled, are part of his Winter Circus series. Occasionally a series of drawings would culminate in a large canvas or canvases, such as the Abandoned Children's Playground series.

Wilson's art, like his writing, reflected his view from the plain. He distrusted international styles in art, but believed that the geographic-demographic characteristics of an artist's surroundings formed the heart and soul of the works.

The University community is invited to the official opening of "View From the Plain," Mon., Sept. 27, 4:30 to 6:30 p.m. The exhibition runs from Sept. 28 to Oct. 24, Mon. through Fri., 10 a.m. to 4 p.m., Saturdays 1 - 4 p.m. Closed Sundays and Thanksgiving. Open Convocation Sunday, 3 - 5 p.m.



Registration Centre staff assisted 6,610 students during the advanced registration period this summer.

Improvements in the works for Overpass

Detailed design plans are being developed to improve accessibility in the Bryce-Wesley overpass. According to Steve Coppinger, associate vice president (finance and admin.), the link will become a "barrier-free passage" for physically disabled people, and windows will also be installed. Coppinger said the link will be closed for renovations some time later this fall.

Department Name Change: Human Resources

The University's Employee Relations Department has changed its name to the Human Resources Department.

"We changed our name so that we would be more recognizable to people outside the University. 'Human resources' is a more commonly used term," said Director Terry Voss. "I also think that the new name is a better reflection of what we do."

The department, located in MacNamara Hall (South), has eight staff members:

- Director Terry Voss is responsible for all services provided by the department and for the administration of the collective agreements and human resource policies.

- Ingrid Truderung is the department's confidential secretary and is responsible for the employment application process.

- Geri Wensel's job focuses on new employees as well as on training and development initiatives for all University staff. This fall Wensel started a new employee orientation program.

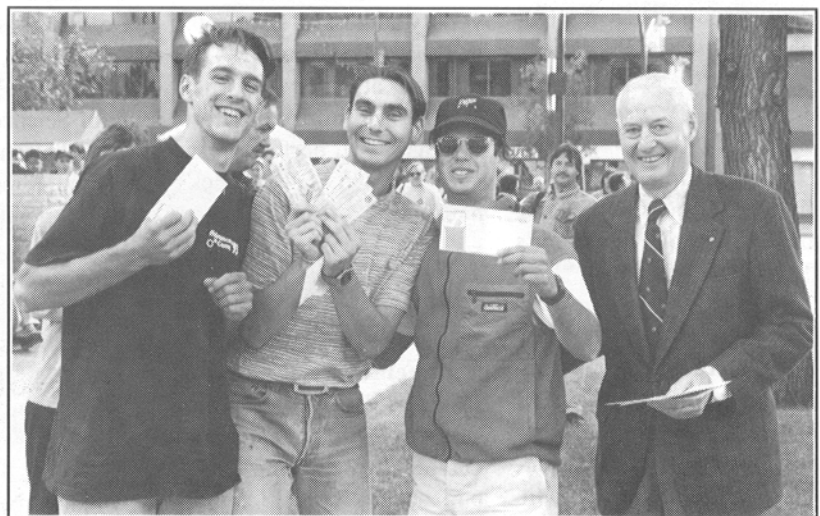
- Martin Robson provides assistance with position descriptions, classifications and salary administration. He also oversees the annual performance evaluation process.

- Mary Anne Walls administers the pension plan for all employees. She also looks after various employee benefit plans, such as group life insurance, the dental plan and the employee assistance program.

- A comprehensive database system of about 1,650 employee records is kept up-to-date by three people in the Human Resources Department: Donna Hebert, Deanna Sigvaldson and Christine Payne (part-time). They keep track of every employee's seniority, vacations, salary review dates, sick leave, and changes to terms of employment that affect salary and benefits.



Pianist Jamie Parker will perform on Sept. 30 in the second concert of the Virtuosi Series. Parker is among Canada's top-ranked artists, capturing first place in the 1984 Eckhardt-Gramatté National Music Competition, the Juilliard Concerto Competition and CBC Radio's 25th National Competition for Young Performers. See "Coming Events" for details on Parker's performance in Winnipeg.



"One Little Goat" climbed one giant rock to win this year's Annual Great Rock Climb. The team of Jeff Booke, David Fitelovitch and Jason Old collected their first-place prizes from President Emeritus Henry E. Duckworth.

COMING EVENTS

"Coming Events" is compiled by University Relations. If you are planning a campus event, please let us know. Send the information (in writing) to Lois Cherney, University Relations, Room 4W17. Basic details about your event are required: what, when, where, sponsor, and the name of a contact person. Submissions must be received at least 10 working days before the event.

MON., SEPT. 27

- The official opening of **View from the Plain: the art of Ernest G. Wilson (1933 - 1987)** will be held in Gallery 1C03 from 4:30 - 6:30 p.m.
- The **Board of Regents** will meet in the Faculty and Staff Club at 5:30 p.m.

TUE., SEPT. 28 TO

SUN., OCT. 24

- **View from the Plain: the art of Ernest G. Wilson (1933 - 1987)** will be held in Gallery 1C03. Hours: Mondays through Fridays from 10 a.m. - 4 p.m., Saturdays 1 - 4 p.m. Closed Sundays with the exception of Oct. 24 from 3 - 5 p.m.

TUES., SEPT. 28

- The **United Way Campaign "Kick-off" Pancake Breakfast** will be held from 7:30 - 8:30 a.m. in Riddell Hall Cafeteria. Tickets for breakfast and entry in the door prize draw are \$2 and are available from Ingrid Wedlake, 786-9818.

WED., SEPT. 29

- Skywalk Series — John Lehr, Department of Geography, will speak on **The Use and Abuse of Manitoba's Provincial Parks**.

THURS., SEPT. 30

- The **Virtuosi Concert Series**, co-presented by CBC Stereo and University of Winnipeg Concerts, features pianist **Jamie Parker** at 8 p.m. at Holy Trinity Church, Donald and Graham. Rush seat tickets are available at the University Info Booth,

and Ticketmaster, 780-3333.

- Skywalk Series — Carol Dahlstrom, soprano, and James Hickerson, classical guitar, will present a concert entitled **Towards Red River**.

FRI., OCT. 1

- Music at Noon — **Jacqueline Ryz**, piano, will play Bach, Haydn and Mozart, and Schubert's F- Fantasy for 4 Hands with **John Melnyk** from 12:30 - 1:30 p.m. in Eckhardt-Gramatté Hall.

- Leg 1 of the **United Way Triathlon — the Bureaucratic Shuffle** will be held from 12:30 - 1:30 p.m. in the fourth floor lounge in Centennial Hall. Members of the faculty, staff/administration and students will compete in a waste paper basket toss-off, paper clip unscramble and a registration maze.

MON., OCT. 4

- President Marsha Hanen will deliver her **State of the University** address at 12:30 p.m. in Theatre B (Room 4M47).

- Music at Noon — **Jack Glatzer**, violin virtuoso from Portugal, will perform from 12:30 - 1:30 p.m. in Eckhardt-Gramatté Hall.

- The **Virtuosi Concert Series**, co-presented by CBC Stereo and University of Winnipeg Concerts, features **Michael Hope, baritone, Douglas Bairstow, oboe, Vincent Ellin, bassoon, and David Moroz, piano**, at 8 p.m. at Holy Trinity Church, Donald and Graham. Rush seat tickets are available at the University Info Booth and Ticketmaster, 780-3333.

- The University **Senate** meeting will be held at 2:30 p.m. in Room 1L13.

WED., OCT. 6

- Skywalk Series — Colin Goff, Department of Sociology, will speak on **Can We Trust the Rehabilitation of Sex Offenders?**

- The **United Way Bake Sale and Silent Auction Ticket Sale** will be held from 12:30 - 1:30 p.m. on the main floor of Centennial Hall by the cafeteria entrance.

- Leg 2 of the **United Way Triathlon—Tricycle Race** will be held from 12:30 - 1:30 p.m. on the main floor of Centennial Hall. Three competitors representing faculty, administration/staff and students will speed through the corridors on tricycles, using the riding style of their choice.

THURS., OCT. 7

- The **Laird Lecture** will feature Edna Einsiedel, University of Calgary, who will speak on "The Public Understanding of Science: Why Does it Matter," from 7-10 p.m. in Eckhardt-Gramatté Hall.

- The Collegiate will be holding their **annual fall dinner and dance** at 6 p.m. in Riddell Hall.

- Skywalk Series — The Keynote Brass Trio presents **Wit, Warmth and Brilliance**.

FRI., OCT. 8

- Music at Noon — Pianist, **Laurie Duncan**, will play Beethoven from 12:30 - 1:30 p.m. in Eckhardt-Gramatté Hall.

MON., OCT. 11

- **Thanksgiving**
—University closed.

WED., OCT. 13

- Skywalk Series — Peter Miller, Department of Philosophy, will speak on **War and Peace in the Woods: Manitoba's Model Forest**.

- The **United Way Bake Sale and Silent Auction Ticket Sale** will be held from 12:30 - 1:30 p.m. on the main floor of Centennial Hall by the cafeteria entrance.

Wanted: Election Campaign Material

As in past years, The University of Winnipeg Library will be collecting printed federal election campaign material from all political parties and independent candidates. Anyone who receives material and is willing to donate it to the library should direct it to Linwood DeLong, Reference Department. Your assistance will be appreciated.

Skywalk Series Continues

The Skywalk Series continues with lectures and concerts every Wednesday and Thursday, 12:15 to 12:45 p.m., at the Winnipeg Centennial Library (2nd floor Auditorium, off the Skywalk). Check "Coming Events" for details.