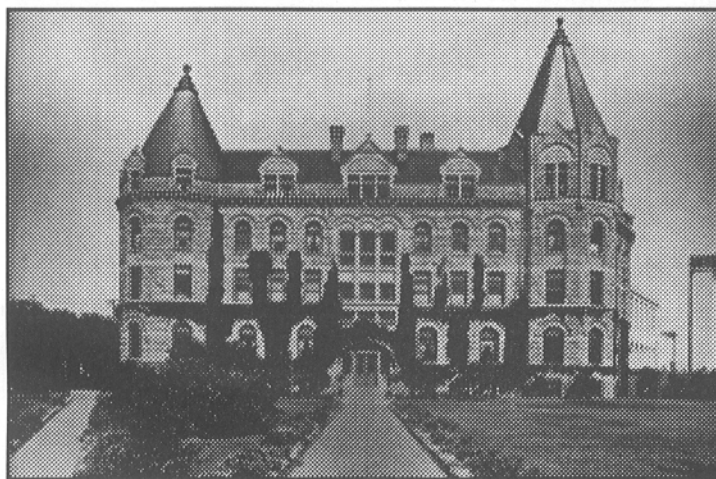


## Happy Birthday Wesley

When next you walk past Wesley Hall, pause and pay your respects. This venerable Winnipeg landmark celebrated its 100th birthday on Sat., Jan. 6.



*Wesley Hall turned 100 years old on Jan. 6*

The stately building's opening a century ago gave Wesley College—one of the founding colleges of The University of Winnipeg—a much-needed permanent home. But the realization of that dream had been anything but easy.

In 1888, the College's first seven students were taught in Grace Church. The next year saw 37 registrations and by 1895, enrolment had climbed to 82.

As enrolments increased, Wesley's Board set about finding a site on which to build the College. James Spence was asking \$14,000 for the five-acre property between Balmoral and Carey (now Spence) Streets, and stretching from Portage to Nellie (now Ellice) Avenue. Although less expensive property was available, the Board favoured the Spence site and its proximity to Manitoba College. Spence eventually reduced his price to \$12,000, offered additional land, and agreed to consider

a mortgage. The Board purchased the property immediately.

Principal J.W. Sparling was relieved of his duties so that he could begin fundraising.

By 1893, \$80,000 had been pledged for the building of the College.

George Browne and S. Frank Peters, architects, designed a building which was to cost \$75,000. The largest contract, covering excavation, stonework, brickwork and plastering, was awarded to J.G. McCallum based on his estimate of \$35,837.61. Legal delays arose, however, and when work began

on the building in May of 1894, it was already behind schedule.

By the time the cornerstone was laid in June of 1894, the anticipated opening had been pushed back to 1895. Even that proved impossible. Within a week of laying the cornerstone, McCallum defaulted due to financial difficulties and the College had to reorganize the contracts and take possession of the sandstone quarry near Calgary.

In the end, the building cost close to \$100,000, and the Board was forced to negotiate a \$25,000 loan from the Canada Permanent Loan and Savings company.

Those difficulties, however, could not dim the jubilation of students and faculty as they finally moved into the grand building on Jan. 6, 1896.

Wesley College quickly became a place

*See WESLEY,  
continued on page 2.*

### *Detour Ahead*

Construction will cause some inconvenience as you travel around the University in the coming months, but the new Student Centre, expected to open next September, will make it all worthwhile.

Extensive renovations have necessitated the closure of the main floor lobby that links Riddell and Graham Halls. Restricted access to this area is expected to continue until renovations are complete. In the interim, the campus community is asked to use alternative routes to get to Riddell Hall through Centennial Hall. For example, using the third floor overpass from Duckworth Centre is a good way to stay warm in even the worst weather.

There will be no access to the Graham Hall elevator from the first floor, although the elevator will remain accessible at other floors. Those who require elevator access to Graham can enter via Centennial Hall through the third floor link. However, the Graham Hall stairwell, as well as the doors into the lobby from Spence Street, will remain open through most of the construction.

*All personnel who work*

*see DETOUR  
continued on page 2.*

## COMING EVENTS

"Coming Events" is compiled by University Relations. If you are planning a campus event, please let us know. Send the information (in writing) to Lois Cherney, University Relations, Room 4W15. Basic details about your event are required: what, when, where, sponsor, price of admission (if any) and the name of a contact person.

MON., JAN. 15

- **Music at Noon**—Music Plus chamber music ensemble features Dvora Marcuse, recorder, Karin Erhardt, cello, Barbara Riske, piano and harpsichord, plus Barbara Hamilton, viola. They will play baroque, romantic and contemporary composers in Eckhardt-Gramatté Hall from 12:30-1:20 p.m.

THURS., JAN. 18

THROUGH SAT., FEB 10  
- **Gallery 1C03 presents "Little Eden: Paintings by Catherine Collins."** Collins'

oil-on-canvas works portray an urban landscape, "a view from the core" that combats the one-sided news stories about life in the core area of Winnipeg. The opening will be from 4-6 p.m., and the artist will be present. The exhibition runs through Sat., Feb. 10. Gallery hours are Mon-Fri., 10 a.m.-4 p.m. and Sat., 1-4 p.m.

MON., JAN. 22

- **Music at Noon**—Jessica Riley, mezzosoprano, accompanied by Audrey Belyea on piano, will perform works by

Bach, Schubert, Strauss, Debussy and others in Eckhardt-Gramatté Hall from 12:30-1:20 p.m.

- **Board of Regents** meets at 5:30 p.m. in the north half of Riddell Hall.

MON., JAN. 29, WED., JAN. 31 & FRI., FEB. 2

- **"What Can I Do with My Degree?"**—University alumni from a wide range of occupations will speak to students about choosing a career path, share their success stories and experiences, and offer advice on how to succeed in a particular field. Watch for a schedule of events. For more information, contact Lois Cherney, 786-9134.

*in edition* is published every week during the regular academic session by University Relations, The University of Winnipeg, 4W16-515 Portage Ave., Winnipeg, Manitoba R3B 2E9. Fax: (204) 783-8983.

Editor: Lois Cherney  
Associate Director  
(Alumni & Communications)  
(204) 786-9134  
cherney@wesley.uwinnipeg.ca

Managing Editor:  
Leslie Vryenhoek  
Communications Assistant  
(204) 786-9172  
vryenhoek@wesley.uwinnipeg.ca

Comments, suggestions and submissions are welcome. (All material is subject to editing.)

*in edition* is printed on recycled paper.

## VP Search Committee Formed

A Review/Search Committee has been formed to select the University's next vice-president (academic). The committee will be chaired by University President Marsha Hanen. Bonnie Archibald, executive assistant to the president, will serve as the staff resource person.

The following people have been chosen by their constituencies to serve on the committee:

### Board of Regents

Keith Black  
Julia DeFehr  
Frank Hechter  
Joy Wood

### Senate

Neil Besner,  
English  
J. Iain McDougall,  
Classics  
Michael McIntyre,  
Psychology  
Desiree Vanderwel,  
Chemistry

### UWSA

David Andrews,  
UWSA Board member  
Arlan Gates,  
President, UWSA

### Support Staff

Judy Graham,  
Student Records  
Wendy Phaneuf,  
Continuing Education

### Alumni

Lorelei Shoemaker,  
President, Alumni Council

## DETOUR

*continued from page 1*

in Graham Hall will be issued keys to allow off-hour access to their area through the third floor link from Centennial. Students who require off-hour access will need to contact security.

If you have questions or concerns, please contact Physical Plant's John Mainer (786-9835) or Norm Loat (786-9223).

Your patience is appreciated as renovations continue.

## WESLEY

*continued from page 1*

of academic excellence, as well as the site of athletic and social activities and home to the many young men who occupied the fourth floor residences for seventy years.

Retired English professor Gerry Bedford has provided rich details of life in Wesley in his book, *The History of The University of Winnipeg*. Over the next few months, *in edition* will carry anecdotes and trivia from the first century of this landmark.